

Innovative Flat Saliva Cup

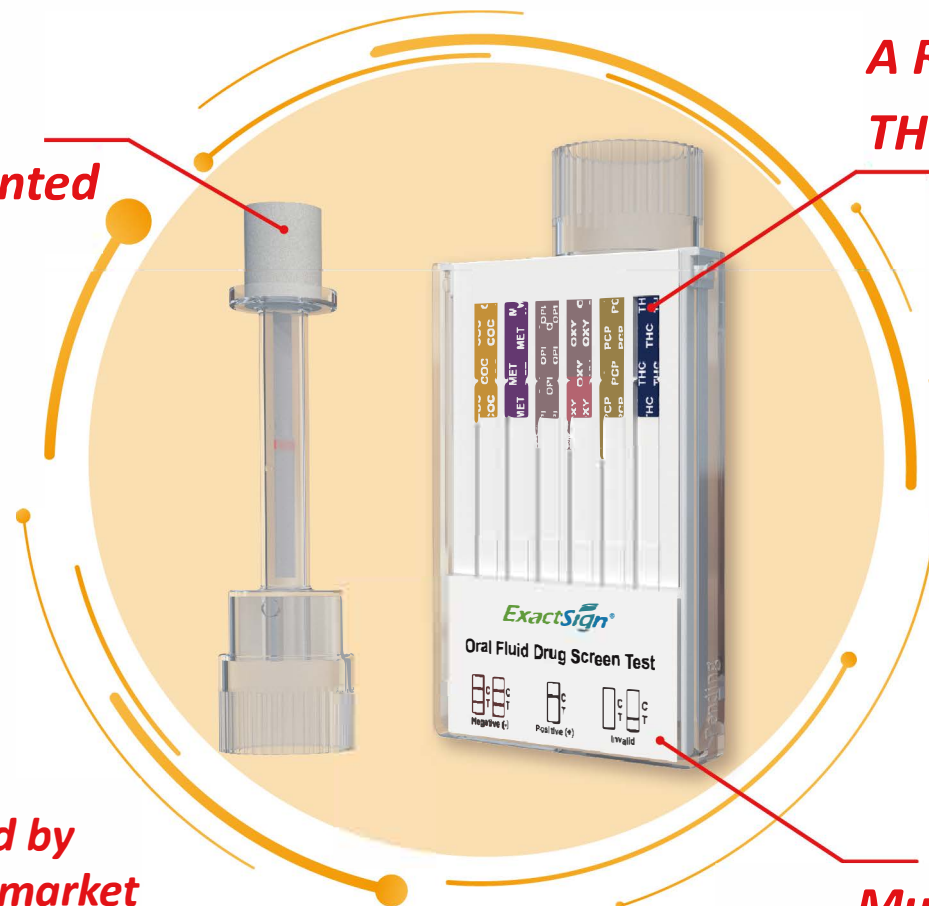
**Biotest Patented
Sponge***

**A Real Parent
THC Test**

Other commercial tests almost fail to detect Parent THC in saliva.



**Favored by
the US market**



**Multi-Drug
Saliva Test**

Testing Menu

Drug	Sensitivity	Drug	Sensitivity
AMP	25/50 ng/ml	PCP	3/10 ng/ml
BZO	30/20/10 ng/ml	OXY	20 ng/ml
COC	15/20/50 ng/ml	BAR	50 ng/ml
COT	30/50 ng/ml	ZOP	20 ng/ml
MDMA	50/100 ng/ml	BUP	5/10 ng/ml
MET	25/50 ng/ml	PPX	30/50 ng/ml
MOP	30/40/50 ng/ml	KET	30/50 ng/ml
MTD	30 ng/ml	6-MAM	3/5/10 ng/ml
Parent THC	15/40/50 ng/ml	K2	25/30ng/ml
FYL	10/20 ng/ml	SMP K2+	10 ng/ml
TML	30/50 ng/ml		

*** Accurate * Fast * Convenient**

✓ **High Parent THC Recovery — 87.44%**

✓ **Suitable for:**

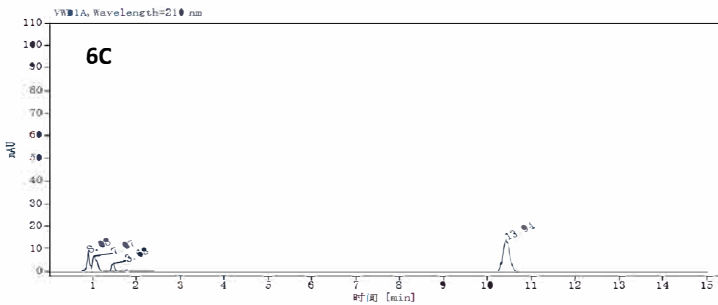
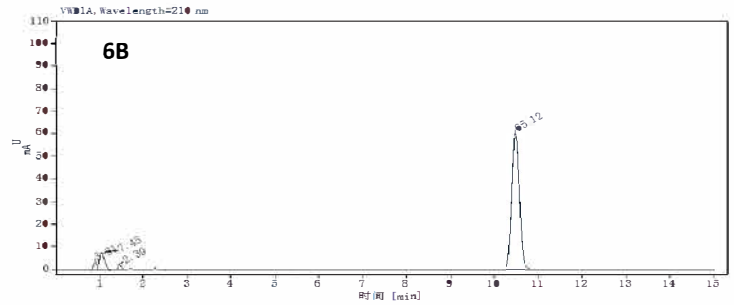
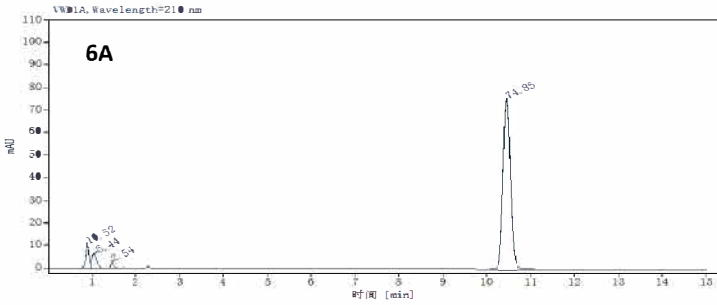
- ▶ **Roadside Testing**
- ▶ **On-site Testing**
- ▶ **Online Proctored Testing**

***Patent Pending**

Parent THC Recovery Comparison Study

	Specimens	Reservation time	Peak area	Peak Height	Quantity (ng/ml)
6A	Parent THC in saliva	10.451	868.6890	74.845	100.770
6B	Parent THC in saliva treated with Biotests patented sponge	10.478	759.5382	65.115	88.108
6C	Parent THC in saliva treated with other commercialized sponge	10.415	161.1271	13.939	18.639

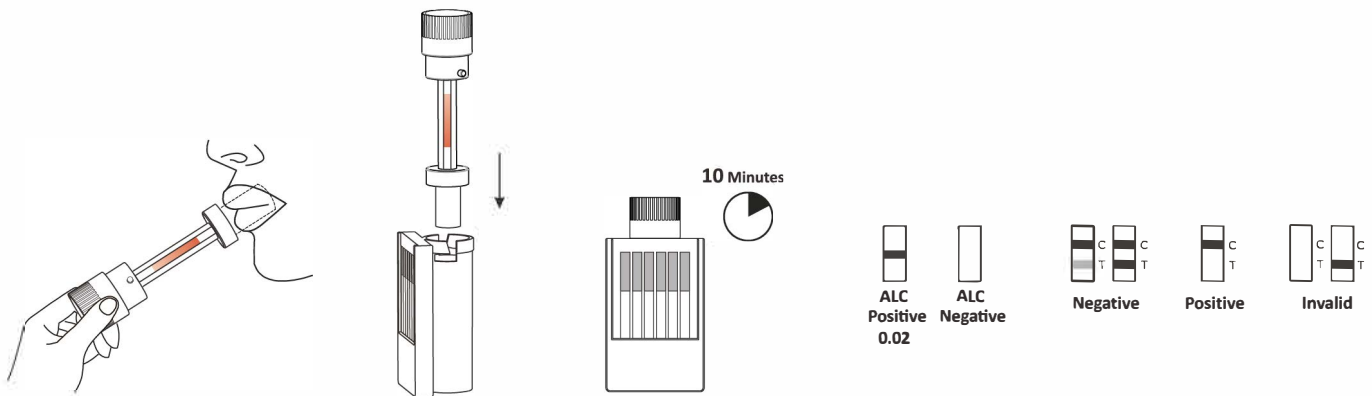
Data by HPLC



THC recovery from Biotest sponge: **87.44%** 👍

THC recovery from commercialized sponge: **18.50%** 😞

Convenient Procedure



Ordering Information

Cat.No.	Product	Specimen	Format	Pack
DMDI-FG8X	Multi-Drug X Drugs Rapid Test Cup With Indicator	Oral Fluid	Cup	25 T
DMDI-MFG8X/XX	Multi-Line X/XX Drugs Rapid Test Cup With Indicator	Oral Fluid	Cup	25 T
DMDIA-FG8X	Multi-Drug X Drugs Rapid Test Cup With ALC Strip	Oral Fluid	Cup	25 T
DMDIA-MFG8X/XX	Multi-Line X/XX Drugs Rapid Test Cup With ALC Strip	Oral Fluid	Cup	25 T